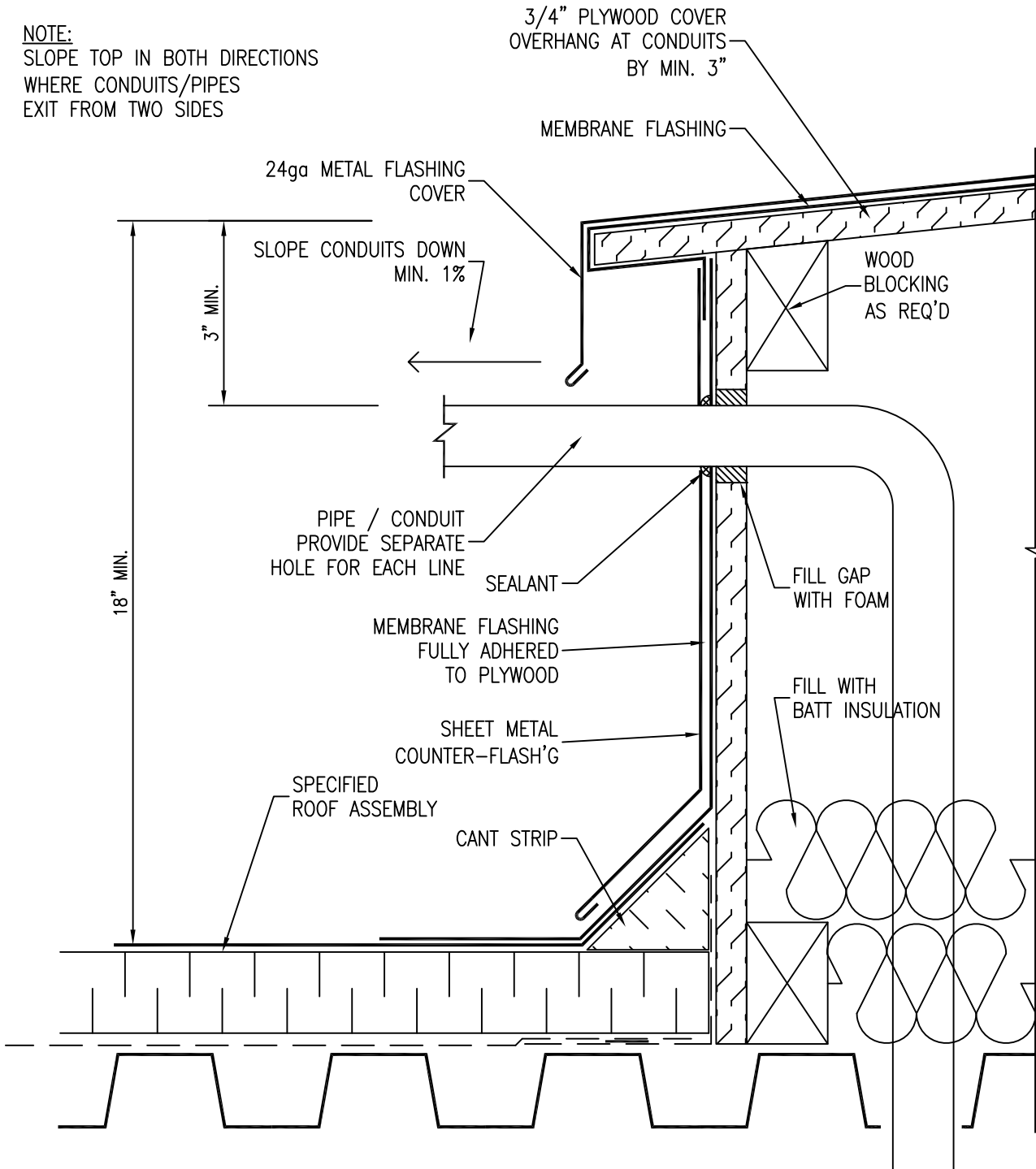


**NOTE:**  
 SLOPE TOP IN BOTH DIRECTIONS  
 WHERE CONDUITS/PIPES  
 EXIT FROM TWO SIDES



**Peter Rohmann Associates Inc.**

BRAMPTON Tel: 905-824-7449  
 WASAGA BEACH Tel: 705-352-3222  
 E-Mail: prai@prohmann.com

PROJECT

STANDARD DETAIL

LOCATION

:

DWN BY:

ATP

PRA #:

CK'D BY:

PRA

SCALE:

1"=4"

DATE:

FEB. 2015

PROJECT NO.

DRAWING TITLE

PIPE / CONDUIT  
 DOGHOUSE

DWG. NO.

DH 1